



# ITTEST

## QUESTION & ANSWER

Guías de estudio precisos, Alta tasa de paso!



Ittest ofrece información actualizada de forma gratuita en un año!

<http://www.ittest.es/>

**Exam : 50-663**

**Title : Novell edirectory and active directory**

**Version : Demo**

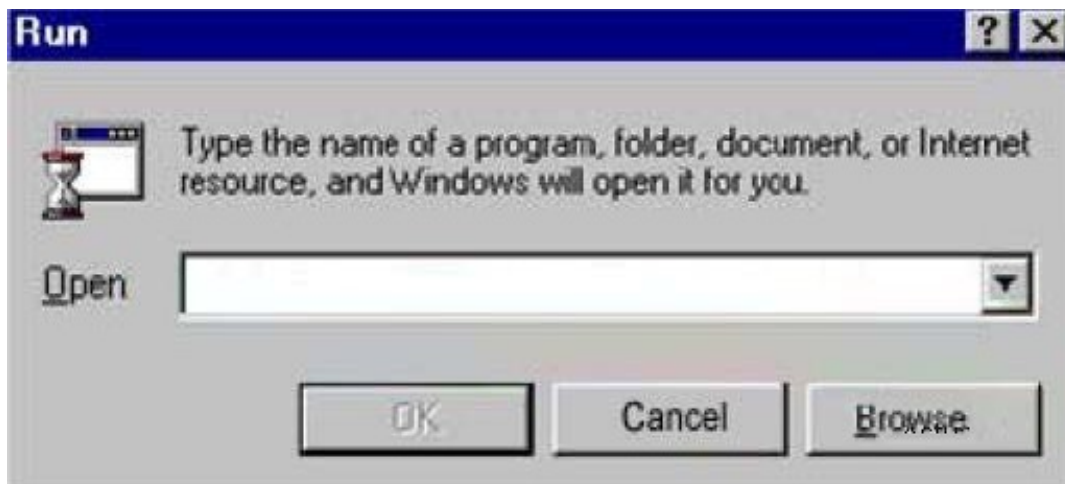
1.Which groups are created by default when a Windows 2000 server is installed?

(Choose 3.)

- A. Users
- B. Guests
- C. Backup Operators
- D. Domain Operators
- E. Network Operators
- F. Server Administrators

Answer: A,B,C

2.You would like to run the default Microsoft Management Console. Enter the command that you would use in the Open box to start this utility.



Answer: mmc

3.Which statements about Windows 2000 native mode are true? (Choose 2.)

- A. Native mode allows backward compatibility.
- B. After you make the switch to native mode, it cannot be undone.
- C. After you make the switch to native mode, you can switch back to mixed mode at any time.
- D. You can switch to native mode if there are Windows NT domain controllers within the domain.
- E. Native mode allows you to take advantage of all features and capabilities of Active Directory.

Answer: B,E

4.Your network environment includes 1 Windows 2000 server, 5 Windows 2000 workstations, 5 Macintosh computers, and 2 printers. You need to share company records that are stored on the server. Which file system would you choose during a Windows 2000 Server installation?

- A. HPFS
- B. NTFS
- C. OS/2

D. FAT-16

E. FAT-32

Answer: B

5.What is the primary mechanism supporting the Kerberos v5 protocol?

A. Key Generation Center

B. Key Distribution Center

C. Ticket Granting Service

D. Key Distribution Control

E. Mutual Authentication Center

Answer: B

6.What is required before eDirectory can be installed on Windows 2000? (Choose 2.)

A. NTFS

B. ConsoleOne

C. eDirectory manager

D. SLP Directory agent

E. Administrative rights

Answer: A,E

7.Which objects displayed in ConsoleOne can be modified and allow you to add eDirectory users to an Active Directory group? (Choose 2.)

A. Group

B. Server

C. Organization

D. eDirectory User

E. Organizational Unit

Answer: A,D

8.Which are features of Windows 2000 Advanced Server? (Choose 2.)

A. It supports up to 4 GB RAM.

B. It supports multiple processors.

C. It provides clustering technologies.

D. It supports Windows 95 device drivers.

E. It supports RAID technology for software virus protection.

Answer: B,C

9.When would Windows 2000 Server be a good choice over Windows 2000 Professional? (Choose 2.)

A. When a web server is needed

B. When Terminal services are needed

C. When plug-and-play support is needed

D. When local security for files is needed

E. When multiple processors exist in a machine

Answer: A,B

10.Which statement defines the Windows 2000 Advanced Server term "scaling up"?

- A. An increase in accessibility of a server via the LAN
- B. Increasing the client access license count for a server
- C. Distributing the load of network requests through server technology
- D. The increased performance and capacity gained by adding processors and memory to a server

Answer: D

11.Which 2 advantages are provided by Windows 2000 Advanced Server over Windows 2000 Server? (Choose 2.)

- A. Higher performance server capability
- B. Internet Information Server 5.0 included
- C. The ability to link servers to handle larger loads
- D. Enhanced Microsoft Management Console functions
- E. The ability to handle up to 10 processors and up to 8 GB RAM

Answer: A,C

12.What is the maximum RAM capacity of Microsoft Windows 2000 Datacenter Server?

- A. 1 GB
- B. 16 GB
- C. 32 GB
- D. 64 GB
- E. 128 GB

Answer: D

13.When compared to Windows 2000 Advanced Server, Windows 2000 Datacenter Server provides which advantages? (Choose 3.)

- A. The Process Control tool
- B. Support for up to 128 GB RAM
- C. 4-node clustering and load balancing services
- D. Support for Physical Address Extension (PAE)
- E. Support for all Pentium III Coppermine Processors

Answer: A,C,D

14.Which statements are true regarding the process of logging in to Windows 2000 Server? (Choose 2.)

- A. The login process cannot be disabled.
- B. A password for the Administrator user is required.
- C. The Ctrl + Esc keystroke initiates the login process.
- D. The Ctrl + Alt + Del keystroke initiates the login process.
- E. The login process must be manually enabled when the workstation is connected to a

network.

Answer: A,D

15. When a user logs in to Windows 2000 Professional, which component verifies that the username and password are correct?

- A. WinLogon
- B. WinVerify
- C. Local security database
- D. HKEY\_CURRENT\_USER
- E. Security Accounts Manager

Answer: C

16. Which are advantages of the mandatory Windows 2000 Professional login process? (Choose 2.)

- A. It requires users to have passwords.
- B. It allows users to have individual configurations.
- C. It allows an individual to be a member of multiple groups.
- D. It allows multiple users to be simultaneously logged in to the same Windows 2000 Professional machine.
- E. It allows users to secure files on the local Windows 2000 Professional machine so other local users can't access those files.

Answer: B,E

17. Which are advantages of the mandatory Windows 2000 Professional login process? (Choose 2.)

- A. Users can have more than one account.
- B. Users can have individual configurations.
- C. Users are required to enter a password to access files.
- D. Users can better share files with others on the network.
- E. Users can better administer their NetWare file system rights.

Answer: A,B

18. Which default user accounts are created on a Windows 2000 server? (Choose 2.)

- A. Guest
- B. Administrator
- C. Backup Operator
- D. Account Operator
- E. Domain Administrator

Answer: A,B

19. Erica needs guest access to a Windows 2000 server. What do you need to do to allow Erica to log in using the Guest account?

- A. Create the Guest user account.
- B. You do not need to do anything.

- C. Enable the Guest user account, which was created by default.
- D. Create a user account for Erica and assign temporary rights to the Guest account.

Answer: C

20. Which tasks can a Windows 2000 administrator perform by default? (Choose 3.)

- A. Set up printing
- B. Manage the file system
- C. Create users and groups
- D. Partition Active Directory containers
- E. Create groups but not users in all domains
- F. Perform administration tasks in all domains

Answer: A,B,C

21. Which tasks can a Windows 2000 administrator perform by default on a Windows 2000 server? (Choose 3.)

- A. Format a floppy disk
- B. Manage security policies
- C. Create shared directories
- D. Merge eDirectory partitions
- E. Perform administration tasks in all domains
- F. Create partitions of Active Directory containers

Answer: A,B,C

22. Which statement is true regarding the initial user account on a Windows 2000 Professional workstation?

- A. When this account is created, it cannot be deleted.
- B. This account is manually created by the administrator.
- C. This account can only be created on a Windows NT server.
- D. This account must be created in order to create additional user accounts.
- E. This account is created automatically if Windows 2000 Professional is installed as a member of a workgroup.

Answer: E

23. Which groups are created by default when a Windows 2000 server is installed? (Choose 3.)

- A. Guests
- B. Network Users
- C. Administrators
- D. Backup Operators
- E. Domain Operators
- F. Server Administrators

Answer: A,C,D

24. When installing Windows 2000 Professional, which of the following are members of

the Administrators local group by default? (Choose 2.)

- A. Guests
- B. Power Users
- C. Administrator
- D. Backup Operators
- E. The initial user performing the installation

Answer: C,E

25.Which groups are created during the installation of Windows 2000 Professional, but do not contain members until specified? (Choose 2.)

- A. Users
- B. Guests
- C. Power Users
- D. Replicators
- E. Administrators

Answer: C,D

26.Which groups are created during the installation of Windows 2000 Professional, but do not contain members until specified? (Choose 2.)

- A. Users
- B. Guests
- C. Power Users
- D. Administrators
- E. Backup Operators

Answer: C,E

27.Which group is only installed during the installation of Windows 2000 Professional or a member server?

- A. Users
- B. Guests
- C. Replicators
- D. Power Users
- E. Administrators
- F. Backup Operators

Answer: D

28.Which Registry subtree holds information about the active hardware profile?

- A. HKEY\_USER
- B. HKEY\_CURRENT\_USER
- C. HKEY\_CLASSES\_ROOT
- D. HKEY\_LOCAL\_MACHINE
- E. HKEY\_CURRENT\_CONFIG

Answer: E



29.Which statement is true regarding the HKEY\_CURRENT\_CONFIG subtree in a Windows 2000 Registry?

- A. It holds information about software configurations.
- B. It contains all configuration data about the computer.
- C. It holds information about the active hardware profile.
- D. It holds data about the current user logged in to the workstation.
- E. It contains security information about all users in the directory database.

Answer: C

30.What Registry editor supports full editing of the Windows 2000 Registry?

- A. REGEDIT
- B. REGEDT32
- C. REGEDIT64
- D. Registry Manager Console (RMC)
- E. Microsoft Management Console (MMC)

Answer: B