



ITTEST

QUESTION & ANSWER

Guías de estudio precisos, Alta tasa de paso!



Ittest ofrece información actualizada de forma gratuita en un año!

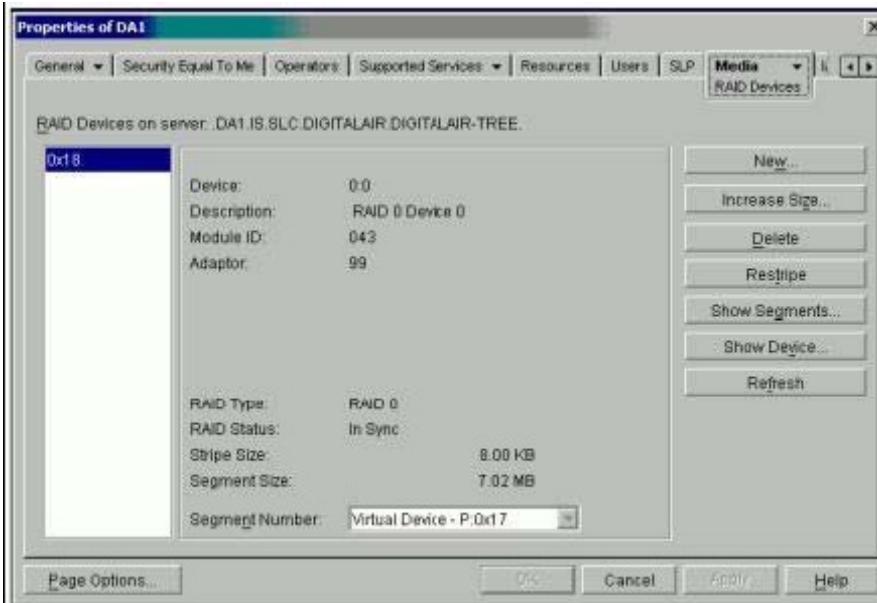
<http://www.ittest.es/>

Exam : 50-682

**Title : Advanced Novell Network
Management**

Version : Demo

1.You just added a second hard drive to your RAID system. Click the area of the graphic that redistributes data across all RAID devices, including the new hard drive.



Answer:

Explanation: Click on Restripe

page 6-9 Restriping redistributes data across all Raid devices, including the new hard drive.

2.Using the UAL licensing model, where is it recommended to install user license if the server object resides in the FLIGHTOPS.DEL.DIGITALAIR container and the user objects reside in the CUSTSERV.DEL.DIGITALAIR container?

- A. In any container.
- B. In the Security container.
- C. In the DIGITALAIR container.
- D. In the CUSTSERV.DEL.DIGITALAIR container.
- E. In the CUSTSERV.DEL.DIGITALAIR or DEL.DIGITALAIR containers.
- F. In the FLIGHTOPS.DEL.DIGITALAIR or DEL.DIGITALAIR containers.

Answer: E

3.In a NCS environment, a resource state of ALERT has been placed on a resource. What is a reason that a resource would be in an ALERT state?

- A. The resource is shut down or in an inactive state.
- B. The resource is unloading from the server it was running on.
- C. The resource is not running and requires administrator intervention.
- D. There isn't an assigned node up that the resource can be loaded on.
- E. The Start, Failover, or Failback mode for the resource has been set to manual.

Answer: E

4 .You have just completed installing NCS and are now going to create a shared disk partition.

Which utility is used to create a shared disk partition?

- A. iMonitor
- B. iManager
- C. ConsoleOne
- D. Server Manager
- E. NWCONFIG.NLM

Answer: C

5.Which are tools you can use at the server console prompt to help troubleshoot IP problems? (Choose two)

- A. PING
- B. TCPCON
- C. NETSTAT
- D. TRACERT
- E. IPCONFIG

Answer: A, B

6 .When performing a migration to a NetWare 6 server, which are valid statements regarding copying volumes? (Choose two)

- A. The volumes cannot be compressed.
- B. The source and destination server's volumes must be NSS.
- C. You do not need to copy all of the volumes at the same time.
- D. The source and destination server's volume size must be the same.
- E. The source and destination server's volume names must be the same.

Answer: C, E

7.Which RAID levels can be implemented with NSS? (Choose two)

- A. 0
- B. 1
- C. 2
- D. 3
- E. 4
- F. 5
- G. 6
- H. 7

Answer: A,B

8.When checking the state of a cluster resource, what color will the resource appear as, if it is unknown?

- A. Red
- B. Gray
- C. Green
- D. Yellow
- E. Blank (or no color)

Answer: B

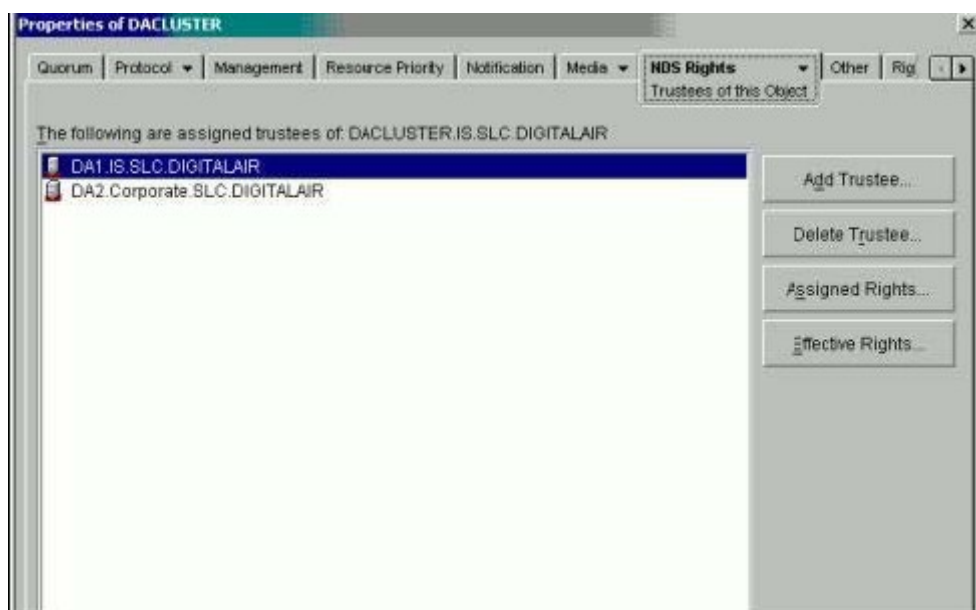
9. Which is a useful troubleshooting step if a server is not communicating?

- A. Verify that cache buffers are over 20%.
- B. Verify that the server is not out of packet receive buffers.
- C. Verify that the DOS=HIGH command is not in CONFIG.SYS.
- D. Remove memory managers from loading in AUTOEXEC.NCF.

Answer: B

10 .Shown are properties of the DACLUSTER object. There are applications in the cluster that you want to load before others.

Click on the tab that will allow you to specify the order that applications load within the cluster.



Answer:

11 After a NetWare 6 server migration, you have noticed that device drivers are not loading. These drivers need to be placed in the directory where SERVER.EXE resides.

Where can you copy these drivers from?

- A. C:\DRIVERS
- B. SYS:SYSTEM
- C. STS:ETC\DRIVERS
- D. SYS:SYSTEM\DRIVERS
- E. C:\NWSERVER\DRIVERS

Answer: E

12 .DRAG DROP

Listed are the SET parameters used that instruct the server how to respond to an abend and the description for each SET parameter.

Drag the parameter to the appropriate description.

SET AUTO RESTART AFTER ABEND =	<input type="checkbox"/>	For all software abends, NMIs and Machine Check Exceptions: attempt to recover from the problem.
SET AUTO RESTART AFTER ABEND =	<input type="checkbox"/>	For all software and hardware abends: attempt to recover from the problem.
SET AUTO RESTART AFTER ABEND =	<input type="checkbox"/>	Do not try to recover from the abend.
SET AUTO RESTART AFTER ABEND =	<input type="checkbox"/>	For all software and hardware abends: immediately restart the server.

Parameters

0 1 2 3

Answer:

13 .An iFolder user has discovered that new files are not being synchronized to his server, while at the same time changes to existing files are being synchronized.

What is the most likely cause of the problem?

- A. The conflict bin is too small.
- B. Corrupted file maps are dirmaps.
- C. The computer does not have sync rights.
- D. The server does not have enough disk space.

Answer: B

14 .You want to modify your NCS environment by changing node assignment to resource using ConsoleOne.

Which object's properties page allows you to change node assignments?

- A. Any node object
- B. The cluster object
- C. The master node object
- D. The Cluster ADMIN object
- E. Any cluster-enabled resource or volume object

Answer: B

15 .If an object is missing a mandatory attribute, how will this object be displayed in ConsoleOne?

- A. As a grayed-out object.
- B. As a black-and-white object.
- C. As a mark in a circle.
- D. As a mark in a square.
- E. As two numbers with a dash between them (eg. 9-6).

Answer: C

16 .What happens during the Finish eDirectory Migration stage of a server migration to NetWare 6 process? (Choose two)

- A. The NIFI files are copied.
- B. The licenses are installed.

- C. The volume objects are updated.
- D. The destination server is restarted.
- E. The file trustee assignment are restored.

Answer: C, E

17 .You are working in a pure IP environment and the workstation is not communicating with the server.

Which are some valid troubleshooting steps that can be executed on the workstation to help identify the problem? (Choose three)

- A. Ping the server.
- B. Use TRACERT.
- C. Verify that DSTRACE is not running.
- D. Use CONFIG to verify that the network board is bound.
- E. Verify the workstation IP address with the IPCONFIG command.
- F. RUN DSTRACE to verify there are no DS communication issues between the workstation and server.

Answer: A, B, E

18 .There are problems when starting your NetWare 6 server.

Which command helps to identify at which point modules are loading during the server startup?

- A. LIST
- B. CONFIG
- C. STARTUP
- D. MODULES
- E. LIST STAGE

Answer: E

19 .Which statements are true about the source server when doing a server migration to NetWare 6? (Choose two)

- A. The source server must be running IP.
- B. Any NetWare 3.x server and higher can be migrated to NetWare 6.
- C. The source server's volumes must be the same size as the destination server's volumes.
- D. If the source server is NetWare 4, the volumes must have long name space support added.
- E. The person performing the migration must have the Supervisor right to the source server's file system.

Answer: D, E

20.Which abend is almost always memory related?

- A. Page fault
- B. Invalid Opcode
- C. Non Maskable Interrupt
- D. General Protection Processor Exception

E. Ate Poison Pill in SbdWriteNode Tick given by some other node.

Answer: C

21 .What are cluster-aware applications for NCS 1.6? (Choose two)

- A. iManager
- B. ManageWise
- C. DHCP Server
- D. RealOne player
- E. Queue-based printing

Answer: A, C

22 .You have setup load and unload scripts for resource in your NCS environment and have specified a timeout value of 300 seconds for each resource.

What will happen to the resource if it doesn't get through the load script in 300 seconds?

- A. It is put into an ALERT state.
- B. It is put into an OFFLINE state.
- C. It is put into a COMATOSE state.
- D. It is put into an UNASSIGNED state.
- E. It is put into a QUORUM WAIT state.

Answer: C

23 .When does synthetic time occur in an eDirectory tree?

- A. When there is no time source in the tree.
- B. When a secondary server acts like a time source.
- C. When time is not synchronized throughout the network.
- D. When an object is modified within the same second from two different sources.
- E. When an eDirectory object has a modification time stamp in the future of the current network time.

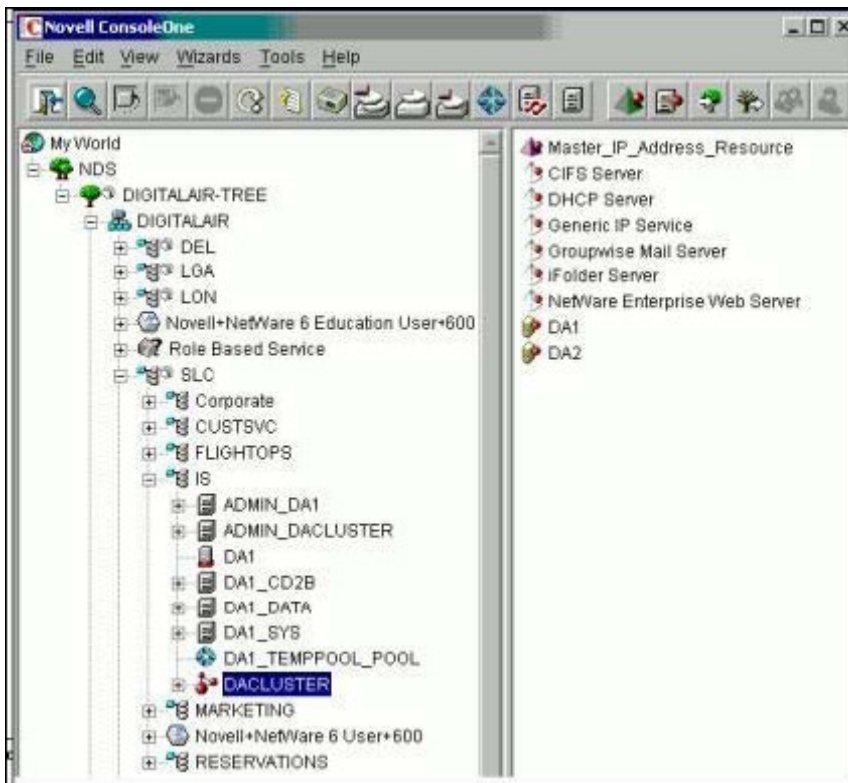
Answer: E

24 .In order to change the IP address of your NetWare iFolder server, which files must be manually modified? (Choose four)

- A. HTTPD.CONF
- B. iFolderClient.exe
- C. AUTOEXEC.NCF
- D. STOPIFOLDER.NCF
- E. STARTIFOLDER.NCF
- F. HTTPD_ADDITIONS_MW.CONF

Answer: A, B, C, F

25.Click on the object that will allow you to view start, failover, and failback node settings.



Answer:

26 .Click on the object that will allow you to specify the amount of time to wait for nodes to join the cluster.

Answer:

27 .Which preconfigured report searched the entire tree, communicates with every NetWare server it finds, and reports errors?

- A. Agent Health
- B. Obituary Listing
- C. Object Statistics
- D. Server Information
- E. Service Advertising

Answer: D

28 .Which tool is used to fix problems with an NSS pool that could not be corrected with other techniques?

- A. VCU
- B. VERIFY
- C. REPAIR
- D. REBUILD
- E. NSSSCAN
- F. POOLREPAIR

Answer: D

29 .When NCS casts off an isolated slave node, the slave node takes a poison pill and abends.

Which statement is true regarding the poison pill?

- A. The master node sends a poison pill directly to the isolated node.
- B. Any of the non-isolated nodes send a poison pill directly to the isolated node.
- C. The isolated node recognizes it is not receiving heartbeats from the master node and then takes the poison pill.
- D. The isolated node realizes that its epoch number does not match the other nodes epoch number and then takes the poison pill.
- E. The isolated node reads a special token on the SBD partition that was created by the other nodes and then takes the poison pill.

Answer: E

30 .Which utility allows you to type in commands at the server console screen?

- A. iMonitor
- B. iManager
- C. ConsoleOne
- D. Server Manager
- E. Remote Manager

Answer: E