



ITTEST

QUESTION & ANSWER

Guías de estudio precisos, Alta tasa de paso!



Ittest ofrece información actualizada de forma gratuita en un año!

<http://www.ittest.es/>

Exam : 922-041

**Title : Nortel ERD 5500/4500
Rls.5.XAdvanced
Config&Maintenance**

Version : DEMO

1. Click on the Exhibit button.



Considering the exhibit, how is traffic entering the stack on switch 2 with a destination on switch 5 processed?

- A. Traffic will flow from switch 2 to switch 1 to switch 5.
- B. Traffic will flow from switch 2 to switch 3 to switch 4 to switch 5.
- C. Switch 2 will select the path based upon the congestion on the cascade cables.
- D. Switch 2 will select the path based upon the ingress port, odd ports send traffic to switch 3, even ports send traffic to switch 1 to balance traffic on the cascade cables.

Answer: A

2. A client needs to configure Internet Protocol Flow Information eXport (IPFix) to export flow information on their Ethernet Routing Switch (ERS) 5530 switch as part of their security solution.

Which step must be performed first?

- A. Each interface must be configured with the IP address of the security server which will receive the IPFix information.
- B. An Advanced License must be installed on each of the ERS 5530 switches that will be exporting flow information.

C.Simple Network Management Protocol (SNMP) community strings must be configured for the security server which will poll the IPFix information.

D.The switch must be configured to specify the version of NetFlow messages to export.

Answer: B

3. An Ethernet Routing Switch (ERS) 5300 has been used in a new multicast design. Five Ethernet switches are connected to the ERS 5300 on the same VLAN. Since all of the hosts are on the same shared media LAN, the ERS 5300 will suppress each forwarding report within the VLAN.

Which advantage does using Internet Group Management Protocol (IGMP) snooping with the ERS 5300 and Ethernet Switches offer?

A.Fast Leave functionality is suppressed.

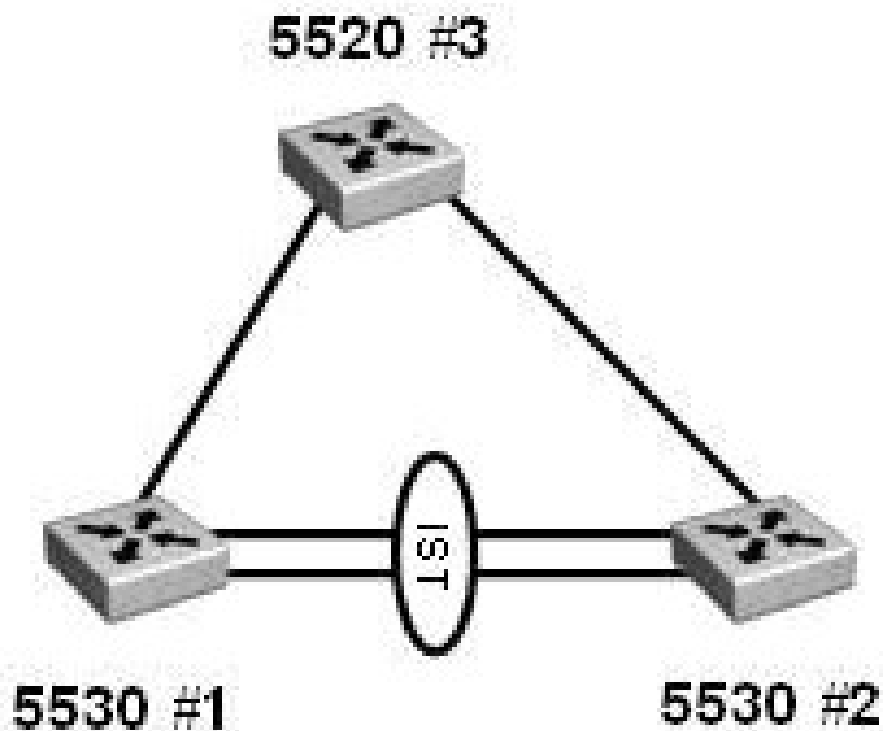
B.It allows for pruning of ports where no IGMP host report has been received.

C.Multicast MAC address floods to all ports on the VLAN.

D.Only one report must be issued.

Answer: B

4. Click on the Exhibit button.



There are three switches in your test lab on which you have been testing the configuration for the past month. You need to configure SMLT on 5530#1 and decide that it would be easier reset the switch to default than to go through the configuration and try to set it to defaults manually.

From the Global Configuration prompt you have entered the command:

```
5520-24T-PWR(config)# boot default
```

When the system reboots, a connection is sent to the switch through the console port, then you assign an IP address to the default VLAN and begin configuring the Integrated Switching and Transmission (IST). This does not work.

Which action must be performed prior to configuring an IST on the Ethernet Routing Switch (ERS) 5530 switch and how could you have avoided this issue?

- A. You must copy an advanced license file to the switch to support SMLT. To avoid losing the license when you reset the switch to defaults use the command `boot partial-default`.
- B. You must copy an advanced license file to the switch to support MLT. To avoid losing the license when you reset to defaults use the command `boot partial-default`.
- C. You must reload the 5.1 code on the ERS 5530. To avoid corrupting the configuration always save the running configuration before rebooting.

D. You must telnet to the switch to configure the IST. After resetting the switch, you must activate an IP interface on the default VLAN to enable routing which is a prerequisite to creating the IST.

Answer: A

5. Click on the Exhibit button.



The following steps were performed to successfully configure the Ethernet Routing Switch (ERS) 5520 to send tagged packets to the telephone and untagged packets to the PC.

- 1) the egress port was removed from VLAN1
- 2) VLAN 210 was added to the egress port
- 3) VLAN 110 was added to the egress port
- 4) the egress port was configured to tag-PVID-only

Which VLAN Configuration Control mode must have been configured?

- A.Strict
- B.Flexible
- C.AutoPVID
- DAutomatic

Answer: B