



# ITTEST

## QUESTION & ANSWER

Guías de estudio precisos, Alta tasa de paso!



Ittest ofrece información actualizada de forma gratuita en un año!

<http://www.ittest.es/>

**Exam : 9L0-313**

**Title : Macintosh Service  
Recertification Exam**

**Version : Demo**

1.If you need to replace a component inside the MacBook Pro (17-inch, Mid 2010) what should be the first step after removing the bottom case?

- A.Disconnect the LVDS cable.
- B.Diconnect the battery cable.
- C.Remove the 5 (5-mn) tri-lobe screws.
- D.Use a can of compressed air to clean away dust.

**Answer: B**

2.If one of the AirPort antennas in a Mac mini (Late 2009) fails, how many antennas must be replaced.?

- A.1
- B.2
- C.3
- D.4

**Answer: C**

3.A customer used a Time Machine backup to restore his data and operating system software to his new iMac (27-inch, Late 2009). Now the new iMac exhibits graphic anomalies. Which of the following is the most useful to ask this customer?

- A.When did you start using Time Machine?
- B.Did you use the Time Machine Restore Utility?
- C.Was the Time Machine backup from an older iMac?
- D.What kind of hard drive is used for your Time Machine Backup?

**Answer: C**

4.Examine the image showing a macBook Pro (15-inch, Mid 2010) logic board. Which of the following symptoms should be present if the appropriate cable was not connected to the highlighted connector?  
Exhibit:

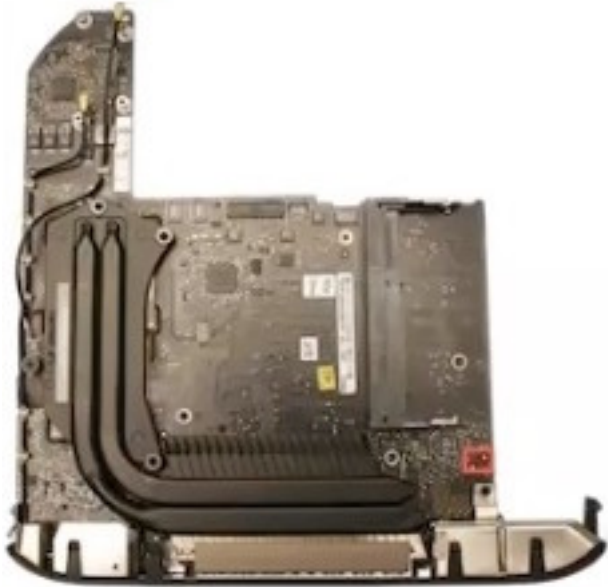


- A.Right speaker does not function.
- B.Optical drive does not fuction.
- C.No keyboard backlight.
- D.Noisy fan.

**Answer: C**

5.Examine the image showing a Mac mini (Mid 2010) logic board. Which of the following symptoms should be present if the appropriate cable was not connected to the highlighted connector?

Exhibit:



- A.Noisy fon.
- B.No infrared reception.
- C.Speaker does not funtion.
- D.No power on when button is pressed.

**Answer: D**