



ITTEST

QUESTION & ANSWER

Guías de estudio precisos, Alta tasa de paso!



Ittest ofrece información actualizada de forma gratuita en un año!

<http://www.ittest.es/>

Exam : E20-370

**Title : Networked Storage - CAS
Implementation**

Version : DEMO

1. The customer's Centera is using CentraStar 3.0. A third-party vendor implemented an application and requested that a virtual pool and profile be created on the Centera. The application fails in its attempt to write to the Centera. What is a possible problem?

- A. CE+ is enabled so no data can be written to the Centera
- B. PEA file was never provided to the application
- C. Replication wasn't turned on
- D. Storage pool creation not completed

Answer: B

2. What is the maximum number of nodes in a Gen 4 Centera Cube?

- A. 4
- B. 8
- C. 16
- D. 32

Answer: C

3. Clips need to be migrated from the default pool to a virtual pool. An access profile has already been created.

Sequence the following steps to migrate clips:

- 1) Grant the profile access to the pool
- 2) Create application virtual pool
- 3) Start migrating poolmappings
- 4) Set the home pool for the access profile
- 5) Create poolmapping

- A. 2, 4, 1, 5, 3
- B. 2, 5, 4, 1, 3
- C. 2, 1, 4, 5, 3
- D. 2, 1, 5, 4, 3

Answer: A

4. What is an "unbundled" cluster?

- A. Flexible solution where the customer chooses any configuration of hardware or software to deploy
- B. Hardware only solution where the software is provided by the customer
- C. Software only solution where the hardware is provided by the customer
- D. Solution where the customer provides the rack in which the cluster is installed

Answer: D

5. What does SDK Failover enable with the default setting?

- A. If a C-Clip cannot be found on the primary cluster, then the request goes to the secondary cluster
- B. If the communication is interrupted to the primary Centera, all data is rewritten to the secondary Centera
- C. If the pool has reached its defined quota then data is written automatically to the default pool
- D. In case of a disk failure, data is written automatically to a node connected to the other power rail

Answer: A

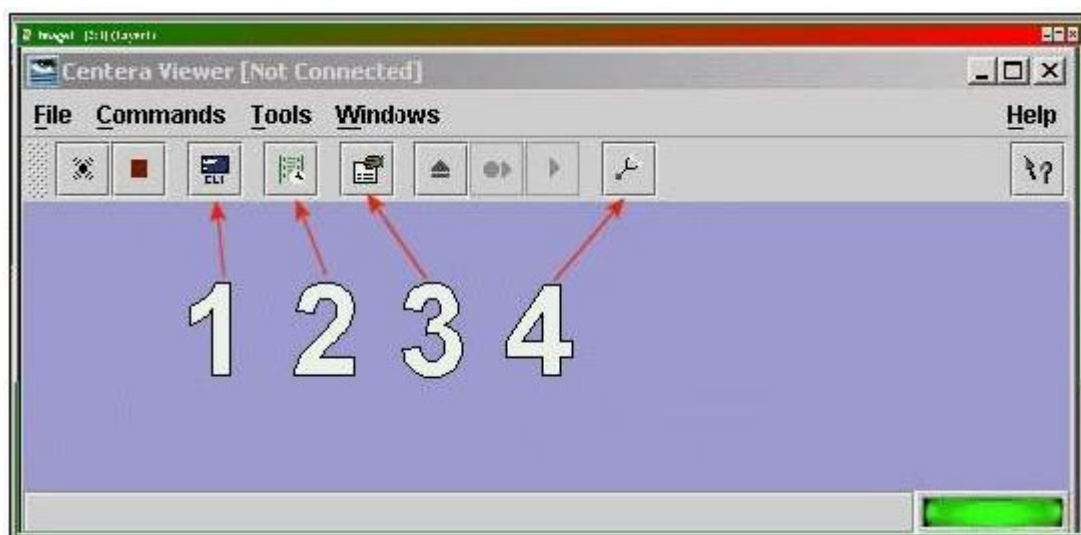
6. How do you launch the CUA Monitor?

- A. Connect Monitor and keyboard directly to the CUA node and launch web services
- B. Start a http session to the IP-address of the CUA using port 16000
- C. Start a https session to the IP-address of the CUA using port 7227
- D. Starting a SSH session to the IP address of the CUA and use the function "M" in the menu

Answer: C

7. Click the exhibit button.

Which button, in the diagram, is used to start the CLI from within Centera viewer?



- A. 1
- B. 2
- C. 3
- D. 4

Answer: A

8. What are the available Centera replication topologies in addition to Uni-Directional and Bi-Directional?

- A. Chain and Inward Star
- B. Multipoint to Point and Chain
- C. Point to Multipoint and Link
- D. Ring and Star

Answer: A

9. A new customer has been testing their Centera in Governance mode. They have specified retention periods ranging from 0 days to 7 years. They would now like to erase the cluster and put it into production. How can the customer remove the test data from the cluster?

- A. Customer can issue a reset cluster command from the CLI
- B. Customer can switch the cluster off for 24 hours to delete all data
- C. Customer can use the privileged delete command to remove the data
- D. Can not be done, data remains on the cluster

Answer: C

10. With which enterprise backup solutions does CASbar work?

- A. NDMP compatible systems
- B. NDMP systems with DMA capabilities
- C. Systems capable of mounting a UNIX file system
- D. Systems capable of mounting a windows file system

Answer: D

11. How can an application get authenticated by the Centera?

- A. Application sends the PAI-file encrypted to Centera as part of the connection process
- B. Connect string contains IP-Address of one or more access nodes, and a valid pair of name and secret
- C. Send IP address of all access nodes and correct subnet mask as part of the connect string
- D. System administrator has to set an environment variable, which points to the location of the PAI-module

Answer: B

12. By default, how many different file sizes does Centera Verify use to perform tests?

- A. 1
- B. 2
- C. 3
- D. 4

Answer: C

13. What is the primary benefit of the GM naming scheme?

- A. Combination of the MD5 plus SHA-256 hash algorithms
- B. Containerizes small files for increased performance
- C. Faster for both ingest and cluster operations
- D. Single Instance Storage

Answer: C

14. Which management role is required for the profile to be used by Centera Console?

- A. Accesscontrol role
- B. Audit role
- C. Monitor role
- D. Replication role

Answer: C

15. What is the function of garbage collection?

- A. Delete all CDFs with elapsed retention periods
- B. Delete all reflections which do not contain pointers to blobs
- C. Delete blobs that have no associated CDF
- D. Delete virtual pools which do not contain data

Answer: C

16. Which item is responsible for granting capabilities?

- A. Access profile
- B. ACL's
- C. CentraStar Mode (Basic, Governance or CE+)
- D. Cluster profile

Answer: B

17. Which tool is used to create domains for use with Centera Console?

- A. Centera CLI
- B. Centera Console CLI
- C. Centera Viewer
- D. PDM

Answer: A

18. Which naming scheme facilitates single instance storage?

- A. CPM

- B. GM
- C. M++
- D. SSPF

Answer: C

19. What remains after an object is deleted from Centera by an application?

- A. Copy of the CDF
- B. Copy of the object
- C. Nothing will remain
- D. Reflection

Answer: D

20. What is an example of the command to turn CPP on when the license has been entered?

- A. set content protection parity on
- B. set protection CPP
- C. set protection mode CPP
- D. set protection write parity 250k

Answer: D