



# ITTEST

## QUESTION & ANSWER

Guías de estudio precisos, Alta tasa de paso!



Ittest ofrece información actualizada de forma gratuita en un año!

<http://www.ittest.es/>

**Exam : HP0-380**

**Title : Planning & Design of HP  
Integrity Entry-Level Srvr  
Solutions**

**Version : DEMO**

1.Click the Task button. Using drag and drop, match each service package with its correct description.

Descriptions	Service Packages
<div>place here</div>	includes Support Plus24, Proactive 24 and Critical Services
<div>place here</div>	Adaptive Enterprise Services
<div>place here</div>	includes Agility Assessment Services
<div>place here</div>	Infrastructure Services
<div>place here</div>	includes Server Services and Network Storage Services
<div>place here</div>	Support Services
<div>place here</div>	includes hardware support, software support, start-up and implementation
	HP Care Pack Services

**Correct:**

Green choice4---->Yellow Choice1

Green choice1---->Yellow Choice2

Green choice2---->Yellow Choice3

Green choice3---->Yellow Choice4

2.An enterprise customer is considering a clustered HP Integrity server solution. Which questions should you ask to assist in this decision process? Select TWO.

- A.Does the customer have a supported LAN?
- B.How much downtime can the customer tolerate?
- C.How much power capacity does the customer have in their data center?
- D.How much would each hour of downtime cost?
- E.Does the customer have a requirement for system management?

**Correct:B D**

3.Which configuration tool offers real-time recognition of incompatible options and exceeding options restrictions when configuring an Integrity system?

- A.SalesBuilder for Windows (SBW)
- B.Rack Configurator
- C.StorageWorks Sizing Tool
- D.ActiveAnswers

**Correct:A**

4.A customer has a 64-bit application that has the following requirements: - minimum 4 processors - minimum 12GB of memory - redundant Fibre Channel Adapter (FCA) for storage Which cost-effective option should you recommend for the application?

- A.an rx1620 with 16GB of memory
- B.an rx2600 with 14GB of memory
- C.an rx4640 with 16GB of memory
- D.an rx8620 with at least 16GB of RAM configured with one nPar
- E.an rx8620 with 32GB of RAM configured with four nPars

**Correct:C**

**5.Your customer is going to purchase an rx2620 server with one HyperFabric2 Fibre Adapter (A6386A) and three single-port U160 PCI-X cards installed. Which statement is true regarding the installation of the HyperFabric2 Fibre Adapter to the first PCI-X slot?**

- A.There is no benefit to this installation.
- B.Fibre Channel cards can be installed only in slot 2, 3 or 4.
- C.HyperFabric2 Fibre Adapter (A6386A) is not supported on rx2620 systems.
- D.The first PCI-X slot has two dedicated I/O channels that provide double the I/O bandwidth.

**Correct:D**

**6.What is required to compile information about a customer's key business issues? Select TWO.**

- A.listing all geographical locations
- B.identifying the customer's strategic objectives
- C.defining the criteria of success
- D.identifying existing customer equipment
- E.defining customer electrical requirements

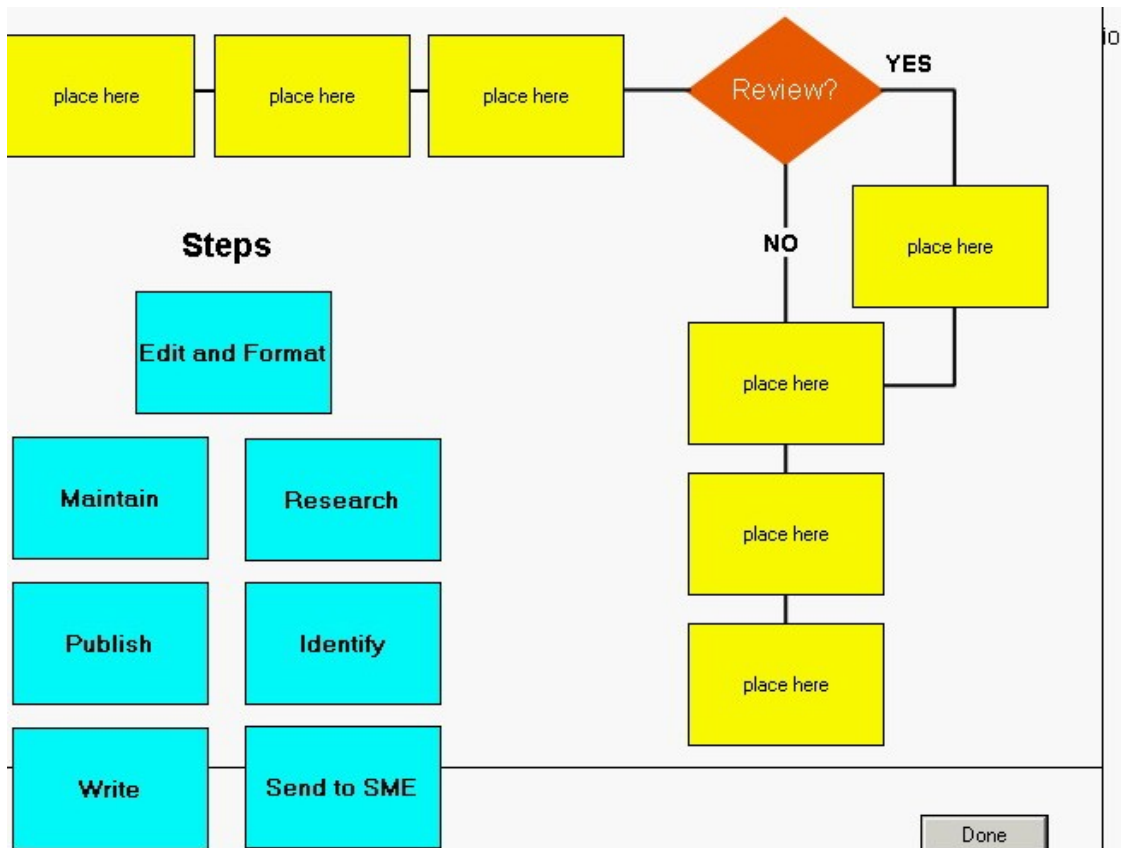
**Correct:B C**

**7.In which step of the Proposal Content Development Process do you verify that the proposal-ready content is based on non-technical, external sources such as the website [www.hp.com](http://www.hp.com)?**

- A.Identify
- B.Edit and Format
- C.Write
- D.Review

**Correct:D**

**8.Click the Task button. Using drag and drop, place each step in the proposal content development process in the correct location.**



**Correct:**

Green choice4---->Yellow Choice1

Green choice2---->Yellow Choice7

Green choice5---->Yellow Choice6

Green choice3---->Yellow Choice2

Green choice6---->Yellow Choice3

Green choice5---->Yellow Choice6

Green choice7---->Yellow Choice4

Green choice1---->Yellow Choice5

**9.You have a customer who has received a quote for two rx4640 servers with Microsoft Windows Server 2003 Standard Edition, four Fibre Channel adapters, and two additional network cards to run a Microsoft SQL test cluster. What is wrong with this quote?**

- A.It is missing two additional network cards for cluster traffic.
- B.It is missing clustering licenses.
- C.The proposed operating system is not supported.
- D.There are not enough PCI slots to support the proposed configuration.

**Correct:C**

**10.Your customer runs a retail outlet store. They have recently experienced rapid growth, and consequently their existing IT infrastructure will need to be upgraded. You will be proposing a solution that includes HP Integrity servers. Which customer requirements should you take into account during your planning? Select TWO.**

- A.system availability
- B.hours of operation

- C.performance needs
- D.user access privileges
- E.business management policy

**Correct:A C**

**11.It is brought to your attention that your customer recently experienced a break-in to their systems. What options would you suggest to the client to minimize break-in vulnerability? Select TWO.**

- A.Disable remote dial-in.
- B.Update all required patches, drivers and software versions.
- C.Disable the administrator account.
- D.Implement system policies to enforce strong passwords.
- E.Keep the ADMIN account password locked in a safe.

**Correct:A D**

**12.Your customer is looking for any entry-level Integrity server that offers multiple Hot Plug PCI-X I/O slots. Which server provides this feature?**

- A.rx1600
- B.rx2620
- C.rx4640
- D.rx7620

**Correct:C**

**13.In which default format does SalesBuilder for Windows (SBW) save whiteboards?**

- A..xml
- B..wwb
- C..xls
- D..doc

**Correct:B**

**14.Which tool can a partner download from the HP website for offline use?**

- A.HP Product Bulletin
- B.ActiveAnswers
- C.Onsite Agent's Reference Set (OARS)
- D.Enterprise Business Center Quick Quote

**Correct:A**

**15.You are asked to collect information about a client's IT infrastructure. What do you include from a site audit to help create a listing of the client's current IT environment? Select TWO.**

- A.user passwords
- B.WAN topology
- C.support contract
- D.location
- E.server details

**Correct:B E**

**16.You are using SalesBuilder for Windows (SBW) to prepare a quote for your customer. To which customer-usable format will SBW export a schematic diagram?**

- A.Adobe Acrobat (PDF)
- B.Visio (VSD)

C.Hypertext Markup Language (HTML)

D.Graphic Interchange Format (GIF)

**Correct:B**

**17.A company wants to implement a disaster recovery strategy. Currently they run daily full backups and all their tapes are kept offsite for safe keeping. Which action best meets their needs?**

A.You should make duplicates of tape media and store duplicates onsite for quick and easy access.

B.You should advise the company that they do not need a disaster recovery solution because all of their data is currently being backed up and stored offsite.

C.You should ask the backup administrator for a list of what data is backed up and create a site manual with all pertinent information.

D.You should suggest a disaster recovery solution that includes operating system recovery, hardware parts replacement, user training and step-by-step guidelines.

**Correct:D**

**18.A customer received a quote for a 4-node rx2620-2 active/active database cluster solution with a combined performance of 200,000 TPMs. The customer's requirement is for a solution capable of continuous availability of 200,000 TPMs, even with the loss of one node. What needs to be changed on the quote?**

A.nothing

B.provide for 10% more TPMs

C.provide for 15% more TPMs

D.provide for 20% more TPMs

E.provide for 25% more TPMs

**Correct:E**

**19.You create a configuration for a quote with SalesBuilder for Windows (SBW). What is the maximum validity of the configuration without updating the Knowledge Base (KB) file of SBW?**

A.two weeks

B.one month

C.three months

D.six months

**Correct:B**

**20.You are asked by a client to suggest methods to secure their network from intruders. What can you suggest to meet this need? Select TWO.**

A.Implement access control to the server room.

B.Upgrade all systems.

C.Configure call-back on all dial-up users.

D.Enable file encryption for all files on all servers.

**Correct:A C**