



ITTEST

QUESTION & ANSWER

Guías de estudio precisos, Alta tasa de paso!



Ittest ofrece información actualizada de forma gratuita en un año!

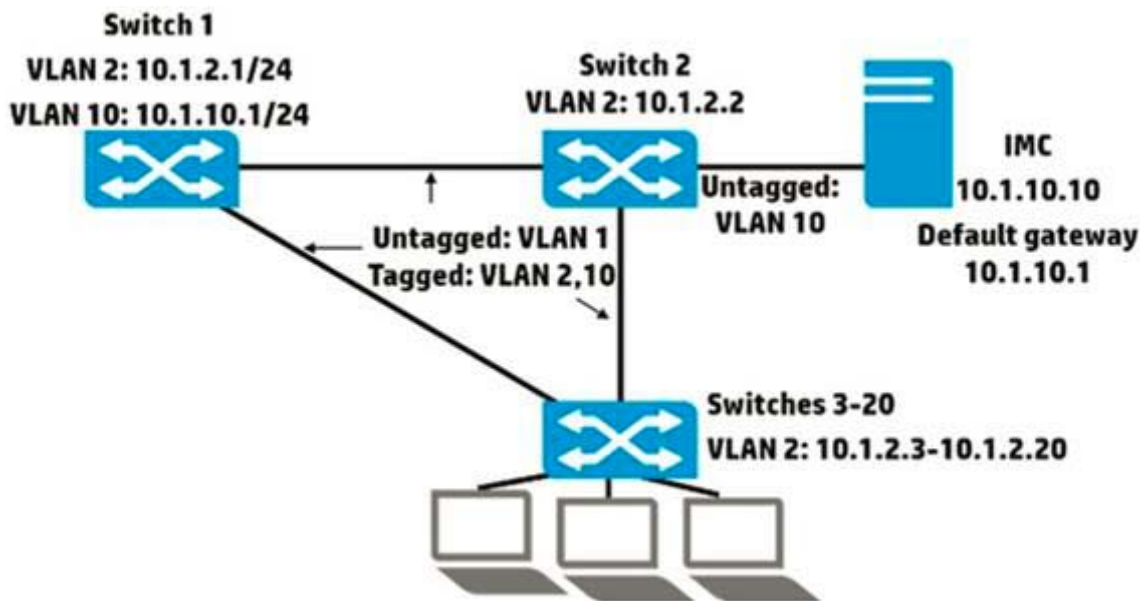
<http://www.ittest.es/>

Exam : **HP2-Z37**

Title : Fast Track - Applying HP
FlexNetwork Fundamentals

Version : DEMO

1.Refer to the exhibit.



The network administrator wants to permit management access to Switch 2 through Switch 20 for HP Intelligent Management Center (IMC).The 10 1.10.0/24 subnet only has 10 free addresses. What should the administrator do to enable IMC to manage Switch 2 through Switch 20?

- A. Configure a default route on all of the switches through 10.1.2 1.
- B. Configure a default route on all of the switches through 10.1.10.1.
- C. Configure the same IP address in 10.1.10.0/24 on VLAN 10 on all of the switches.
- D. Configure the same IP helper address, 10.1.2.1, on VLAN 2 on all of the switches

Answer: D

2.A network administrator is setting up passwords on an HP Provision switch. The administrator enters these two commands:

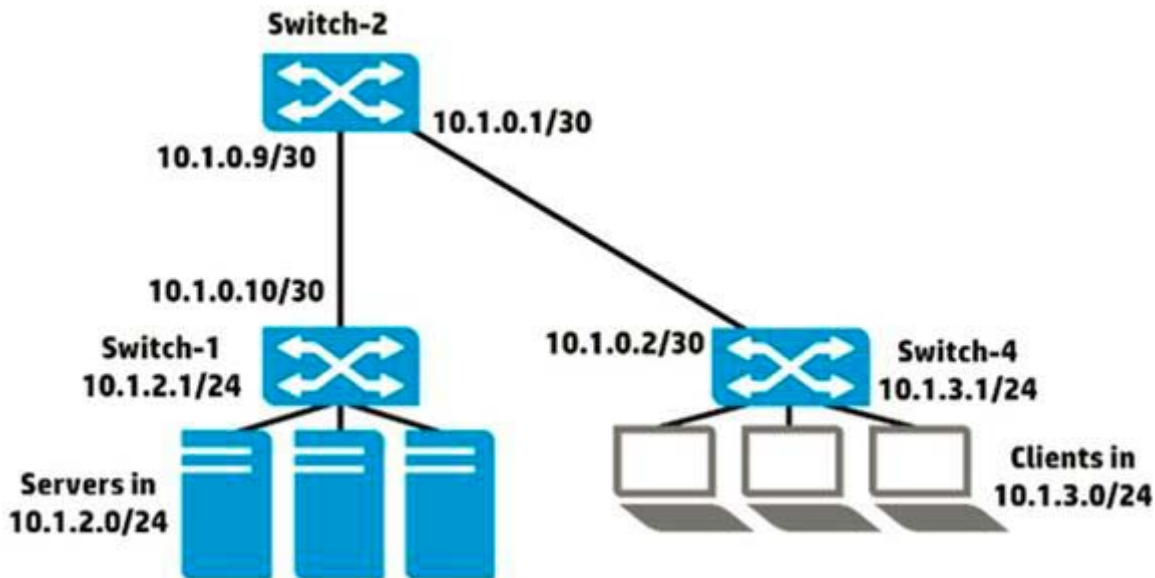
```
Switch(config)# password manager user-name admin1password password
```

```
Switch (config) # password manager user-name admin2 password password
```

- A. Users can enter either admin 1 or admin2 and password to access the CLI; they receive limited or full rights based on the username.
- B. Users must enter admin2 and password to access the CLI; they receive full rights.
- C. Users must enter admin1 and password to access the CLI; they receive limited rights and cannot reach enable mode.
- D. Users can enter either admin1 or admin2 and password to access the CLI; they receive full rights.

Answer: D

3.Refer to the exhibit.



A network administrator is creating a route to 10.1.2.0/24 on Switch-4. What is the correct next hop for the route?

- A. 10.1.2.1
- B. 10.1.0.9
- C. 10.1.0.1
- D. 10.1.0.2

Answer: B

4. A network administrator is planning to add redundant links to a topology with HP Provision switches. What correctly describes the default support for spanning tree?

- A. Spanning tree is enabled and operating in RSTP mode.
- B. Spanning tree is enabled and operating in PVST mode.
- C. Spanning tree is disabled.
- D. Spanning tree is enabled and operating in MSTP mode.

Answer: C

5. HP solutions help to meet the needs of which trend in today's data center networks?

- A. increasing numbers of Layer 3 hops
- B. separation of network and storage traffic
- C. virtualized environments
- D. scale-up for monolithic applications

Answer: C