



ITTEST

QUESTION & ANSWER

Guías de estudio precisos, Alta tasa de paso!



Ittest ofrece información actualizada de forma gratuita en un año!

<http://www.ittest.es/>

Exam : **ICDL-Windows**

Title : ICDL-Windows ICDL
Windows Exam

Version : Demo

1. On the simulated Windows desktop carry out the necessary steps to restart the computer.



A. Select->start->shutdown->restart->ok

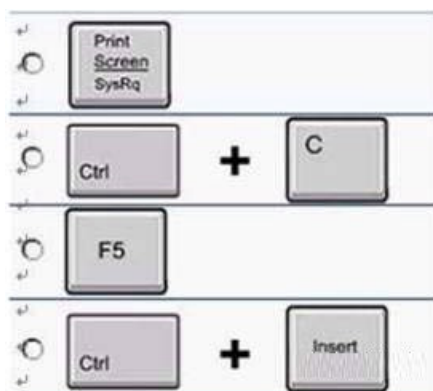
Answer: A

2. If the computer application you are working on has "frozen" what is the first thing you should do.?

- A. Re-install the non-responding application.
- B. Pressctrl+Alt+Delete.
- C. Turn off the PC's power supply.
- D. Slect Exit from the application's File menu.

Answer: B

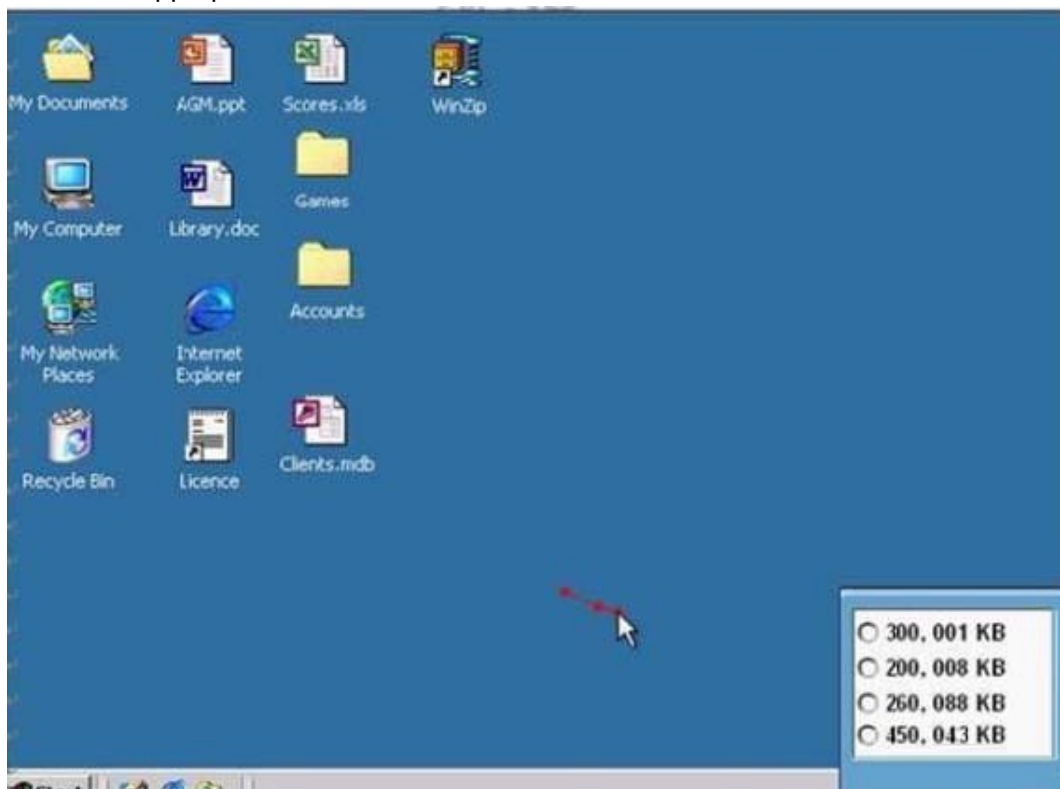
3. Pressing which of the following keys would place a picture of what is currently displayed on your monitor onto the clipboard?



A. A

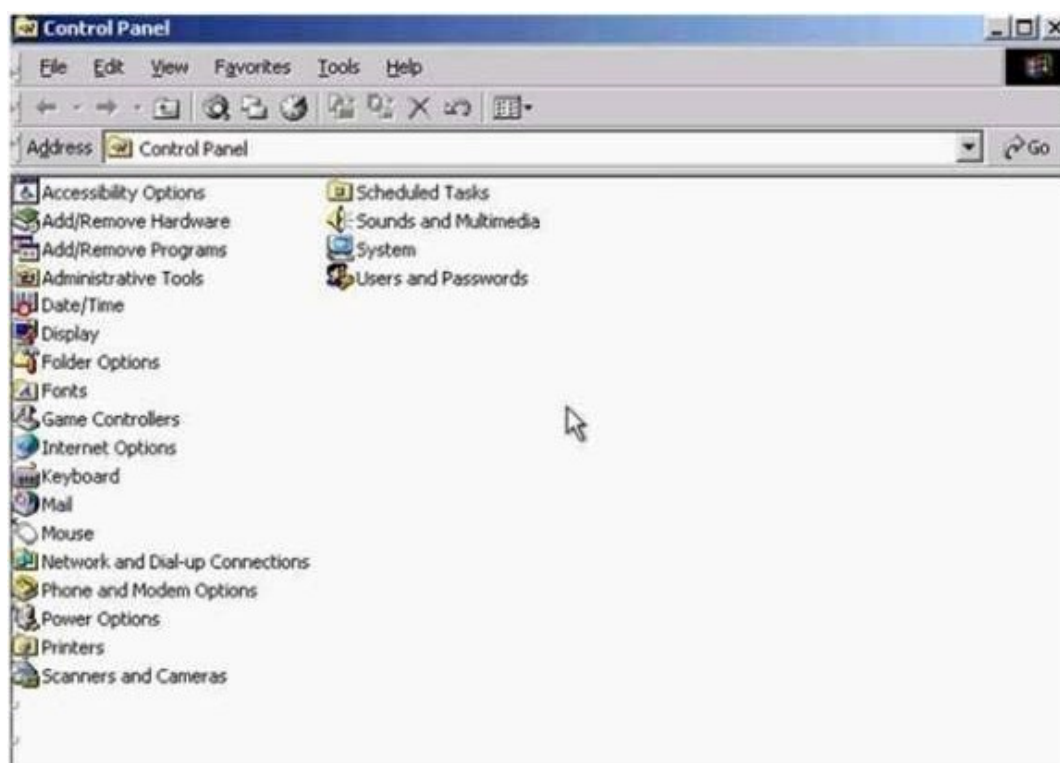
Answer: A

4. Use the simulated Windows Desktop to find out how much RAM is installed. Select the appropriate radio button then click on SUBMIT.



A. R.click on my computer->properties->General->select the RAM Speed->ok
Answer: A

5. Change the keyboard language to UK English.



A. Select->keyboard->input Locales->select to EnglishUK->press Set as Defaults->ok

Answer: A