



# ITTEST

QUESTION & ANSWER

Guías de estudio precisos, Alta tasa de paso!



Ittest ofrece información actualizada de forma gratuita en un año!

<http://www.ittest.es/>

**Exam** : **VCP510-DT**

**Title** : VMware Certified  
Professional 5 – Desktop

**Version** : Demo

1.Which two steps are part of the View Composer installation process? (Choose two.)

- A. select the Enable View Composer checkbox in the View Administrator
- B. install the View Composer on the vCenter Server system
- C. register View Composer service on the Windows system
- D. configure ODBC connection to the View Composer database

**Answer:** B,D

2.The View Composer Database stores information about which three components and connections.? (Choose three.)

- A. Active Directory Connections
- B. View Connection Broker Connections
- C. Replicas created by the View Composer
- D. Disposable data disk created by View Composer
- E. Linked-clone desktops deployed by View Composer

**Answer:** A,C,E

3.Which two platforms are supported by VMware View Composer in a VMware View 5 environment? (Choose two.)

- A. VMware vCenter 4.0 Update 3 running on Windows Server 2008 R2
- B. VMware vCenter 4.1 Update 1 running on Windows XP Pro 64-bit
- C. VMware vCenter 4.1 Update 1 running on Windows Server 2003 64-bit
- D. VMware vCenter 5.0 running on Windows Server 2008 R2

**Answer:** A,D

4.What are three supported Database Servers for VMware View Composer in a VMware View 5 environment? (Choose three.)

- A. Microsoft SQL Server 2005 Express with vCenter Server 4.1 U1
- B. Microsoft SQL Server 2005 Express with vCenter Server 5.0
- C. Microsoft SQL Server 2005 SP3 Standard with vCenter Server 5.0
- D. Microsoft SQL Server 2008 R2 Express with vCenter 4.0 U3
- E. Microsoft SQL Server 2008 R2 Express with vCenter Server 5.0

**Answer:** A,C,E

5.What is the proper syntax to use when adding a domain user to the View Composer configuration?

- A. DOMAIN\USER
- B. DOMAIN.COM\USER
- C. OU=DOMAIN, CN=USER
- D. USER@DOMAIN.COM

**Answer:** B

6.What are three required permissions that need to be assigned to the View Composer user account? (Choose three.)

- A. Create User Accounts
- B. Create Computer Objects

- C. Delete Group Accounts
- D. Delete Computer Objects
- E. Write All Properties

**Answer:** B,D,E

7.Which two operating systems are supported for the View Connection Server? (Choose two.)

- A. Windows Server 2003 R2 64-bit Standard or Enterprise
- B. Windows Server 2003 R2 32-bit Standard or Enterprise
- C. Windows Server 2008 R2 32-bit Standard or Enterprise
- D. Windows Server 2008 R2 64-bit Standard or Enterprise

**Answer:** B,D

8.Which two ports must be opened in the firewall to enable communication between a Security Server and a Connection Server? (Choose two.)

- A. 4001
- B. 8443
- C. 3389
- D. 8009

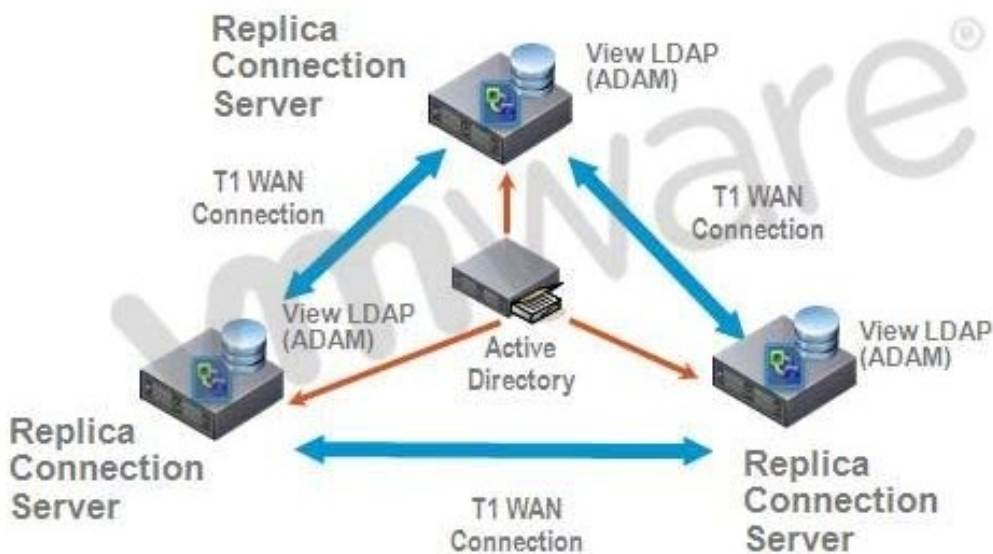
**Answer:** A,D

9.Which two ports must be opened in the firewall to enable communication between a View Connection Server and the vCenter Server running View Composer? (Choose two.)

- A. 18443
- B. 443
- C. 389
- D. 4172

**Answer:** A,B

10.Click the Exhibit button.



A proposed configuration of three replica servers is shown.

What can result from this configuration?

Multiple ADAM instances can cause a performance problem.

- A. Three replica servers can result in client connection problems.
- B. Multiple connections to Active Directory can cause a performance problem.
- C. Replication over WAN connections can cause inconsistencies in the LDAP database.

**Answer: C**

11. An administrator is preparing to install a View Connection Server 5.x for the first time.

Which two server prerequisites are required for a proper installation on Windows Server 2003? (Choose two.)

- A. Configure a SSL certificate for use with the Connection Server.
- B. Configure a static IP address on the server.
- C. Configure a domain administrator account for installation.
- D. Configure the firewall with the appropriate open ports.

**Answer: B,D**

12. An Administrator is upgrading to View Connection Server 5.x from a previous release.

Which component is omitted from installation automatically during an upgrade?

- A. VMware Message Bus Component
- B. VMware Script Host
- C. VMware PCoIP Secure Gateway
- D. VMware VDMDS

**Answer: D**

13. What is the minimum required level of privileges required to install the View Connection Server?

- A. Domain User
- B. Domain Administrator
- C. Local Power User
- D. Local Administrator

**Answer: D**

14. An administrator is adding a replicated instance of View Connection Server to the environment silently. Which MSI property would be used to identify the instance being replicated?

- A. ADAM\_PRIMARY\_INSTANCE
- B. ADAM\_PRIMARY\_NAME
- C. VDM\_INSTANCE\_NAME
- D. VDM\_SERVER\_INSTANCE

**Answer: B**

15. Which two operating systems are supported for a View Transfer Server installation? (Choose two.)

- A. Windows Server 2008 32-bit
- B. Windows Server 2003 R2 SP2 32-bit
- C. Windows Server 2003 SP2 64-bit
- D. Windows Server 2008 R2 64-bit

**Answer: B,D**

16. How many disks can a View Transfer Server concurrently transfer?

- A. 15
- B. 60
- C. 4
- D. 30

**Answer: B**

17. Which TCP port must be open on the firewall of the View Transfer Server?

- A. 443
- B. 21
- C. 389
- D. 4172

**Answer: A**

18. An administrator is creating a new virtual machine for use as a View Transfer Server.

Which SCSI controller should be selected?

- A. Buslogic Parallel
- B. LSI Logic Parallel
- C. LSI Logic SAS
- D. VMware Paravirtual

**Answer: C**

19. Which three items must be configured prior to installing a View Security Server? (Choose three.)

- A. Connection Server
- B. Security Server External URL
- C. Security Server Firewall Exceptions
- D. Security Server Pairing Password
- E. Security Server Static IP address

**Answer:** A,C,D

20.An administrator is installing a View Security Server on a Windows Server 2003 R2 system.  
Which three Windows Firewall ports must be pre-configured prior to installation to enable remote access?

(Choose three.)

- A. 443
- B. 3389
- C. 4001
- D. 4172
- E. 8009

**Answer:** A,B,D